



PROFESSIONAL SERIES

# Saliva Drug & Alcohol *Screen*

*Multi Test*



**For the detection of:**

*Amphetamine,  
Benzodiazepines,  
Cocaine,  
Marijuana,  
Methamphetamine,  
Opiates and Alcohol*

**Safe | Simple | Accurate**

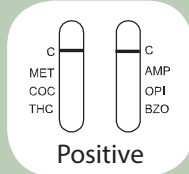


[www.smithbiomed.com](http://www.smithbiomed.com)

## READING THE RESULTS

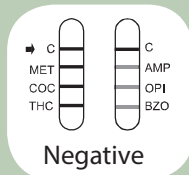
### POSITIVE

A coloured line in the control line region (C) but no line in the test line region (T) for a specific drug indicates a positive result. This indicates that the drug concentration in the saliva specimen exceeds the designated cut-off for that specific drug.



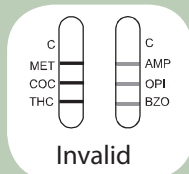
### NEGATIVE

A coloured line in the control line region (C) and a coloured line in the test line region (T) for a specific drug indicate a negative result. This indicates that the drug concentration in the saliva specimen is below the designated cut-off level for that specific drug.

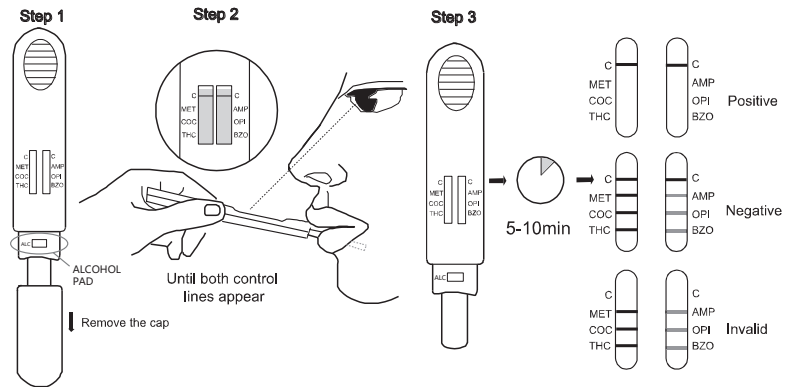


### INVALID

Control line fails to appear. Insufficient specimen volume or incorrect procedural technique is the most likely reasons for control line failure. Review the procedure and repeat the test using a new test. If the problem persists, discontinue using the test immediately and contact your local distributor.



## SPECIMEN COLLECTION AND PREPARATION



**Do not place anything in the mouth including food, drink, gum or tobacco products for at least 10 minutes prior to collection of oral fluid specimen.**

1. Bring the pouch to room temperature before opening it, remove the test from the sealed pouch and use it within 1 hour.
2. Take off the test wand cap and insert the absorbent wick to the mouth, put it under the tongue to collect oral fluid until the control line appears and then take out the wand. Keep level, it will take approximately 2 minutes to collect sufficient saliva up to the control line.
3. **Keep the test wand level to your mouth when you collect the saliva sample, otherwise it will lead to a wrong result.**
3. Place the test wand on a clean and level surface.
4. Read the drug test results at 5-10 minutes. Read the alcohol test result at 2 to 5 minutes.

Do not read the results of drug tests after 1 hour, do not read the alcohol test result after 5 minutes.

### ALCOHOL TEST RESULTS

**Alcohol Negative Result:** If the alcohol pad shows no colour change (remains white or cream colour), it should be interpreted as a negative result (no alcohol present). A result where the outer edges of the alcohol pad produces a slight colour but the majority of the pad remains colourless the test should be repeated to ensure complete saturation of the alcohol pad with oral fluid. If the second result is the same, the results should be interpreted as negative (no alcohol present).

### Interpreting Alcohol Test Results:

1. Read results at 2 to 5 minutes (results not accurate after 5 min.)
2. Compare reactive pad to coloured blocks below.
3. Interpretation of results.
  - a. Negative: No colour change on reactive pad.
  - b. Positive: Reaction pad changes from green to blue colour. Estimate the approximate blood level by comparing the colour of the reactive pad to the colour chart below.
4. **Not to be used as an evidential test for drink / driving.**

