

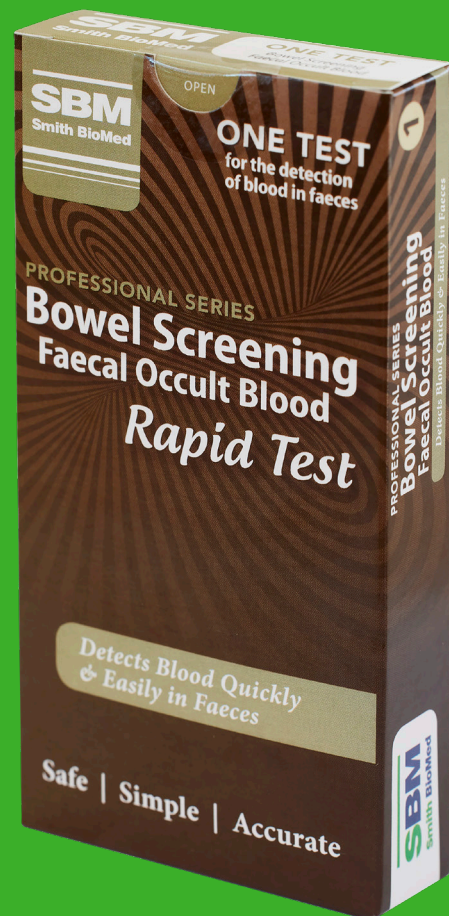


Smith Biomed  
97 Gill Street New Plymouth  
E: info@smithbiomed.com

smithbiomed.com

# Home Bowel Screening Test

Easy to follow instructions to get quick, accurate results.



**Affordable and fast:** No need to wait or pay for an appointment with your GP or testing lab.



**Accurate:** Smith Biomed tests are easy to use and provide accurate results.



**Accessible and private:** Get personal health information in the privacy of your own home.

## Preparation: what you'll need + what to avoid

### The Smith Biomed Bowel Screening kit; containing

- Stool collector
- Specimen collection tube (with extraction buffer liquid)
- Test cassette

### What you'll need

- Timer set to 5 minutes
- An appropriate level surface, such as a bathroom vanity

### Additional considerations

- Avoid testing within 3 days before or after a menstrual period
- Avoid alcohol and aspirin for at least 48 hours prior to testing
- When taken in excess, some medications can cause gastrointestinal irritation and bleeding. If it can be done safely, these substances should be discontinued at least 48 hours prior to testing.
- Do not eat, drink, smoke or vape in the area where the specimens or kits are handled.
- Handle all specimens as if they contain infectious agents and ensure sanitary disposal.
- The test should remain in the sealed pouch until use. Do not use after the expiry date.

## Procedure – how to do the test

Keep out of reach of children

1

### Collection

Position the stool catcher provided in the kit across the toilet seat and when ready, collect a stool specimen in the catcher (not into the toilet).

2

### Assembly

**Unscrew the <blue> cap** from the collection tube, and push the applicator into the specimen in **3 different sites**. Do not scoop. Carefully screw the applicator back into the collection tube.

3

### Mix

Shake the closed collection tube vigorously to mix the stool specimen with the clear buffer liquid.

4

### Wash

While no personal contamination should have occurred, at this point it's good practice to wash and dry your hands in preparation for the test.

5

### Arrange

Once you are ready to test the specimen, remove the test cassette from the foil pouch and place it on a level surface. Best results occur when the test is performed immediately after opening the foil pouch.

6

### Test

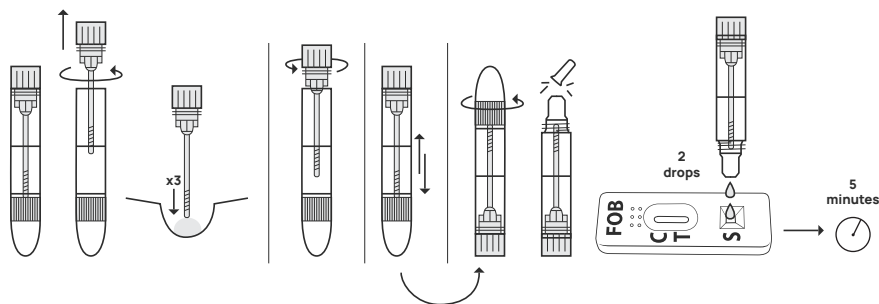
Invert the collection tube, and **screw open the <white> cap**. Break off the tip and transfer **2 full drops** of liquid to the specimen well (**S**) of the test cassette, avoiding air bubbles. Start your timer for 5 minutes.

7

### Results

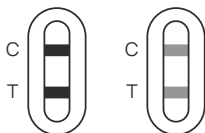
**Read your results at the 5 minute mark.**

Do not read results after 10 minutes when the test will have expired.



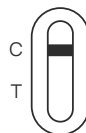
## Conclusion: how to read the results

### Positive



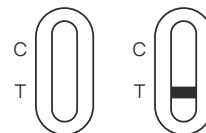
**Positive: Two coloured lines appear** – one line in the control region (**C**) and one line in the test region (**T**). Because the intensity of the line will vary depending on the amount of blood detected, even a very faint line in the test region (**T**) should be considered positive.

### Negative



**Negative: One coloured line appears in the control region (C)** and nothing appears in the test line region (**T**).

### Invalid



**Invalid: Control line fails to appear (C)**. An insufficient specimen amount or incorrect technique are the most likely reasons for failure. Review the procedure and repeat the test with a new kit. If the problem persists, discontinue using the test kit and contact your local distributor.

**If the result is positive – consult with your doctor**