

PROFESSIONAL SERIES

# Urinary Tract Infection (UTI) Test

*Detects Infections Quickly & Easily*

Simple and Easy to Use



The Urinary Tract Infection Test is used for rapid qualitative detection of infections quickly and easily, testing for Leukocytes, Blood, Nitrite and Protein in human urine.

**SBM**  
Smith BioMed

[www.smithbiomed.com](http://www.smithbiomed.com)

## PERFORMING THE TEST:

1) Open the foil pouch and take out the test strip. Do not touch the test fields. Once opened, it is recommended the test is performed immediately.

2) Dip the test strip in the urine sample.

**ATTENTION:** Make sure that all four test fields are immersed for about 1-2 seconds.

3) Then remove the test strip and wipe off any surplus urine against the rim of the container.

4) Wait for 2 min. **(do not read results after 3 minutes)** Read the result separately for each parameter, comparing colour with colour chart provided.

## A POSITIVE RESULT

A positive result is IF ANY ONE OF THE FOUR SUBSTANCES has been detected in your urine. It may not mean you have an UTI but it is most likely that something is wrong in your urine. Get in touch promptly with your doctor, who will be able to give a more accurate diagnosis. When you visit your doctor, please take this instruction leaflet with you so that he/she will be better informed as to the type of test you have performed.

## WHAT SHOULD I DO IF MY TEST RESULT IS NEGATIVE?

Your test result is negative ONLY if the result on the test field for all four substances is negative. But if you still feel the signs of a UTI or have any other symptom, then contact your doctor to arrange a more thorough examination. Pharmacists can also provide advice.

**Do not make any important medical decisions after taking the test without first referring to your doctor.**

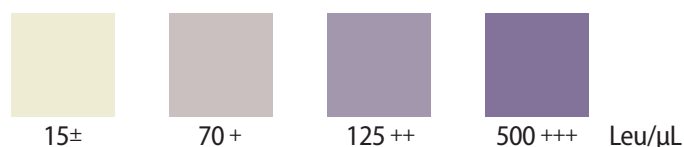
### Negative

The Test field for LEUKOCYTES stayed whitish.  
The Test field for BLOOD stayed mustard yellow.  
The Test field for NITRITE stayed white.  
The Test field for PROTEIN stayed yellowish.



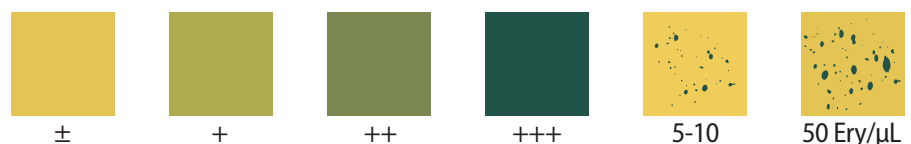
### Positive Result For Leukocytes

If the colour of the test field has changed to purple, then leukocytes have been found in your urine.



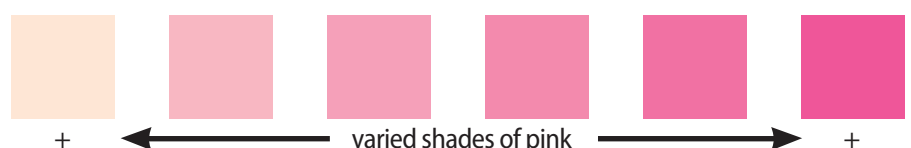
### Positive Result For Blood

If the colour of the test field has changed to green (or some green spots appear on the background), then blood has been found in your urine.



### Positive Result For Nitrite

If the colour of the test field has changed to pink, then nitrites have been found in your urine.



### Positive Result For Protein

If the colour of the test field has changed to green, then proteins have been found in your urine.

