

# BeneCheck BK6-12M

## Plus Multi-Monitoring Meter and Strips



Glucose x Cholesterol x Uric Acid



## BK6-12M

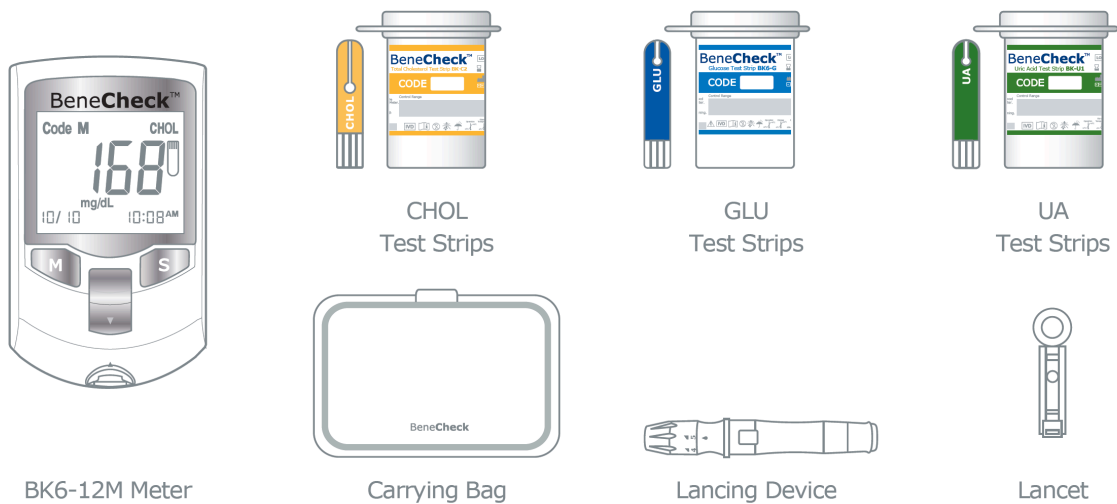
- + Blood Glucose
- + Total Cholesterol
- + Uric Acid

Leading Sample Volume  
Shortest Detection Time  
Only 0.8  $\mu$ L for CHOL

The **BeneCheck BK6-12M multi-monitoring system** is an easy to use, handheld device which allows you to check your **Total Cholesterol**, as well as **Blood Glucose** and **Uric Acid**, in the one device.

The **BeneCheck** system uses the latest amperometric technology in a unique electrochemical process. Automatically collecting by capillary action a tiny amount of blood to provide accurate and consistent results in 30 seconds. A simple, painless, speedy procedure. It needs less blood than other meters to perform these tests.

## PACKAGING CONTENTS



### BeneCheck Advantages

- The **BeneCheck Plus** Multi-Monitoring meter has the lowest recurring cost for strips
- Accurate results delivered extremely quickly
- No complex menu system
- Most cost-effective strips on the market
- Small samples required to run tests
- Extremely long battery life
- Small and compact

For meter specifications refer:

[www.smithbiomed.com](http://www.smithbiomed.com)

<https://www.smithbiomed.com/gout-management/>

## Questions and Answers:

### What test strips does the BeneCheck Plus Multi-Monitoring meter use?

There are three types of strips for this meter:

- uric acid
- glucose
- cholesterol

Only use the BeneCheck strips in this meter as strips from other brands do not apply to BeneCheck meters.

### What type of batteries are used?

- CR 2032.

Please remove the plastic tab under the battery before using.

### How do I set/ change the time on BeneCheck meter?

Press “S” Button (3 secs) → One “Beep” Sound → Setting Mode → Turn Off Automatically after Setting

Setting order: Year/ Month/ Date/ Hour/ Minute

- Press “M” button to advance one unit, “S” button to enter next setting.

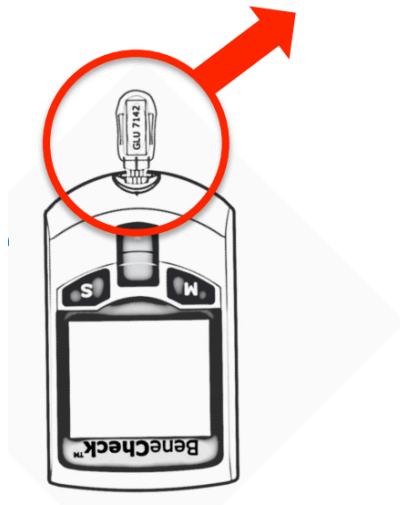
Refer [www.smithbiomed.com](http://www.smithbiomed.com) for video instructions

### What is coding?

You will need a code card to input the code to your meter. For BeneCheck meter, you NEED to do the coding step every time you open a new vial of strip.

Refer [www.smithbiomed.com](http://www.smithbiomed.com) for video instructions

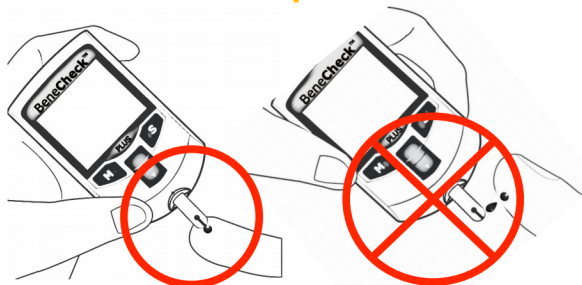
## Code Card



### How do I code BeneCheck meter?

1. Make sure the meter is off.
  2. Insert the code card.
  3. Make sure the code on screen, strip vial and code card is the same.
  4. Remove the code card.
- Code your meter when you first use it or when you open a new vial of strips.
  - With Auto Strip Recognition function, once you code your meter, the meter will switch to the test mode automatically when you insert a strip.
- Refer [www.smithbiomed.com](http://www.smithbiomed.com) for video instructions for the use of the meter

### The right way to acquire blood sample:



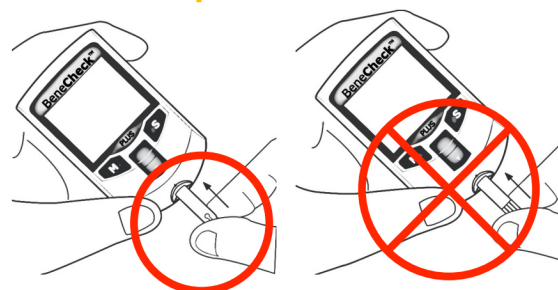
**Correct**

The inlet side of the strip will draw blood sample automatically.

**Wrong !!!**

DO NOT drop your blood on the strip.

### The right way to insert the strip:



**Correct**

DO NOT insert the strip Inlet side into the meter.

**Wrong !!!**

## How to store the BeneCheck meter?

- Do not use in extremely dry environments. It may cause static discharges.
- Do not use under electromagnetic radiation, or close too much electrical equipment.
- Do not disassemble the meter for any reason.
- Keep meter clean by wiping the exterior appearance with tissues or lint-free cloth.

## Cleaning and Caring for BeneCheck Meter

Use a soft slightly damp cloth with 75% alcohol or mild dishwashing liquid diluted with water to clean the meter surface.

### Note:

- Do not allow contact with any other wet clothes or liquids
- Do not allow any liquid to run in or around the test port and battery cover.
- Make sure the meter is completely dry before use.

## How accurate is the BeneCheck meter?

BeneCheck meets the ISO 15197 standard and is regarded as one of the most accurate point of care meters for measuring uric acid level internationally.

## Do I need to calibrate my BeneCheck meter?

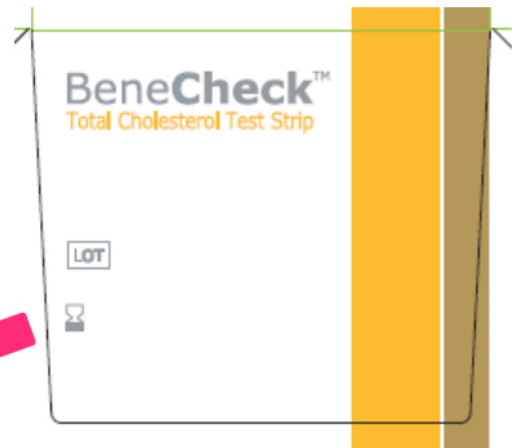
No, you do not have to calibrate your meter. If you have doubts about test results, please contact your local distributor.

## What is the duration of the BeneCheck Strip before expiring?

The expiring date is printed on the box of strips. Once you open a vial of strip, please use it within 3 months.

## Expiring Date

Ex: 🕒 2015-09



### What happens if I use expired test strips?

Using expired test strips, you may get inaccurate test results. Please check expiry date before use, and mark the open date on the strip vials. The expiry date is printed on the strip box.

### My BeneCheck strips have not passed the expiring date yet, why are they damp already?

The strips could get damp

- if your hands are wet when you take out the strip
- if you do not close the strip vial immediately
- if you do not preserve the strips in a suitable condition.

### Storage conditions for BeneCheck strips

Store your strips at room temperature, 10-30°C

- Prevent direct sunlight, heat, do not refrigerate nor freeze.
- DO NOT pack your strips separately in different container.
- DO NOT place your strips in refrigerator.
- Recap your strip vial immediately after you take out the strip, and make sure it is closed properly.
- DO NOT replace the strip in the vial after taking it out.
- DO NOT expose your strip in the air for a long time.
- DO NOT put the code card in the strip vial.

Can I remove a strip and carry it separate to the vial before testing?


Absolutely NOT!

The strips will become damp easily and influence the test results. There is drying agent in the vial, and the expiring date is the same as the strip. So please keep the strip in the original vial.

Why are my test results from BeneCheck meter are different from other meters?

According to FDA regulation, when you want to compare test results, you need to acquire blood samples at the same time from the same spot, and compare with biochemical analyzer. You cannot compare the results directly even the meters are the same model and brand.

Please make sure you follow the steps when you clean your hands:

- 1** • Take out the strip before you sterilize your hands with alcohol wipes.
  - 2** • Before opening strip vial, make sure your hands are clean and dry.
  - 3** • After taking out the strip, please recap the vial immediately, and make sure it is closed completely.
  - 4** • Use the alcohol wipes to sterilize the puncture site.
  - 5** • Make sure the puncture site is dry from the alcohol sterilization. Otherwise it will influence the test result.
- 

I am the only one using lancets, can I reuse it?



No that is why the Symbol of "Do Not Reuse", "Single Use", "Use Only Once".

## What are the reasons for not reusing the lancets?

- Less painful
- To avoid infection
- Less harm to skin tissue

## Can the first drop of blood be used for testing?

No wipe off the first drop of blood.

## How can I get a drop of blood easier while sampling?

- Warm your hands by washing them with warm water, but make sure they are dry before testing.
- Massage your hands from your palm to fingers a couple times.

## How much blood do I need to perform a test?

Blood Glucose - 0.7  $\mu\text{L}$

Total Cholesterol - 0.8  $\mu\text{L}$

Uric Acid - 1  $\mu\text{L}$